

Summary of MYDAUS/YTS 2006 Results
for
Franklin County

Prepared
By



for
The Maine Center for Disease Control and Prevention
and
The Office of Substance Abuse,
Bureau of Health and Human Services

August, 2006

TABLE OF CONTENTS

	Page
Understanding the Data.....	i
Student Participation by Grade as Percent of Enrollment	1
Summary of Substance Use	2
Substance Use by Grade	
Alcohol – Prior 30-Day Use	3
Cigarettes – Prior 30-Day Use	4
Marijuana – Prior 30-Day Use.....	5
Binge Drinking – During Prior 2 Weeks	6
Prescription Drugs – Ever Used.....	7
Inhalants – Ever Used.....	8
Stimulants – Ever Used.....	9
Substance Use Trends - 2000, 2002, 2004 and 2006	
Alcohol – Prior 30-Day Use	10
Cigarettes – Prior 30-Day Use	11
Marijuana – Prior 30-Day Use.....	12
Binge Drinking – During Prior 2 Weeks	13
Prescription Drugs – Ever Used.....	14
Inhalants – Ever Used.....	15
Stimulants – Ever Used.....	16
Prohibitive Behaviors – Prevalence during Prior Year.....	17
Pro-Social Behaviors - Prevalence during Prior Year	18
Students Feeling Unsafe at School – Prevalence by Grade	19
Risk and Protective Factors	
Grade 6: Risk Factors.....	20
Grade 6: Protective Factors.....	21
Grade 8: Risk Factors.....	22
Grade 8: Protective Factors.....	23
Grade 10: Risk Factors.....	24
Grade 10: Protective Factors.....	25
Grade 12: Risk Factors.....	26
Grade 12: Protective Factors.....	27

UNDERSTANDING THE DATA

Student Confidentiality

To protect student confidentiality, individual reports have not been generated for schools when fewer than 20 students participated in the MYDAUS/YTS. When fewer than 20 students in any one grade participated, the data for that grade was not reported. **Note: Table rows will be shaded in gray to identify grades where less than 20 students participated.**

Confidence Intervals

In the graphs on the following pages, the data labeled “%” is the weighted* proportion of students responding in a specific way to a question; for instance, 29.0% of Maine’s middle and high school students said they had consumed alcohol at least once in the 30 days prior to taking the MYDAUS/YTS. However, because not all of the eligible students answered that question (or even took the survey), we have to determine statistically how well the response of the participating students might represent the response of all the eligible students in the population (in our example, the population is the State of Maine). We did this by calculating the **95% Confidence Interval (CI)**, meaning that if all the eligible students in the population answered the question, we are 95% confident that their response would lie between the **Lower Confidence Limit (LCL)** and the **Upper Confidence Limit (UCL)**. The higher the proportion of eligible students in the population answering the survey question, the narrower the confidence interval and the more confidence we have that the results represent the experience of the student population as a whole. **Therefore, the higher the participation rate at your school and district, the more confidence you can have in those results.**

Comparing Local Data to Maine’s: Is the Difference Statistically Significant?

If the confidence interval around the local students’ response does not overlap the confidence interval around Maine’s response, then the local response is considered to be **Significantly Different** from Maine’s. If the local results are significantly lower, you will find a minus (-) under “Sig Diff”, and if the local results are higher, you will find a plus (+). **Please note that in many instances Maine's substance use has been higher than national rates, so you need to decide if “lower than Maine” is good enough.**

***Weighting the Data**

The students who participate in the MYDAUS/YTS may not represent all the eligible students in the population, relative to age and gender. Because grade and gender are known to influence results, we correct for under-representation by **weighting the data**. For example, say there were 200 students at your high school and 100 were male and 100 were female; all 100 female students took the survey but only 50 of the male students participated. We would then give each female’s response a weight of 1 and each male’s response a weight of 2. The actual weighting of the MYDAUS/YTS data is considerably more complex, and is discussed in the MYDAUS 2006 Technical Report, Appendix A - Methodology, Method of Weighting (<http://www.maine.gov/dhhs/osa/data/mydaus/mydaus2006.htm>).

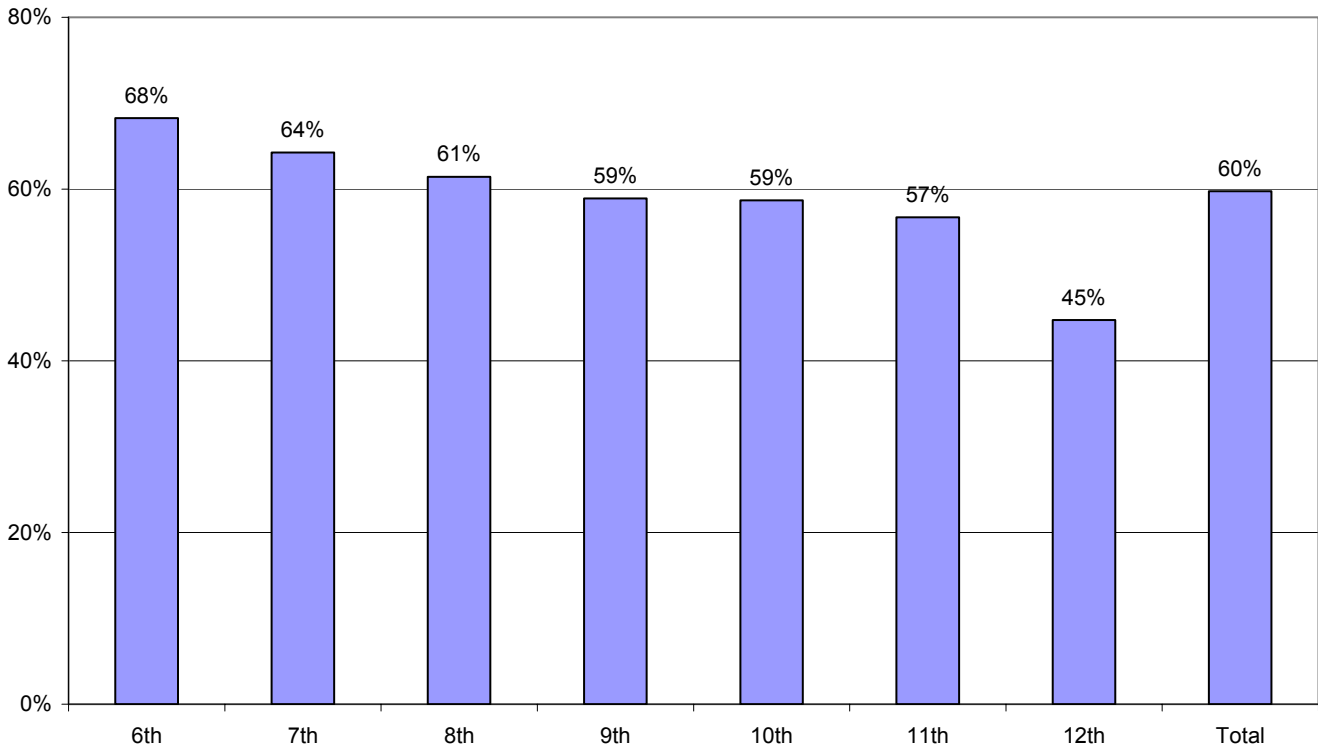
Additional Information

You can find additional reports (in the 2004 format) by going to the MYDAUS website home page (www.maine.gov/maineosa/survey/home.php) and clicking on the appropriate map (state, school, etc.) You can also access the **results for each of the questions** on the survey by clicking on the “pie chart” icon under the maps, and then choosing the desired category and question. Tips on how to use the data can be found in the MYDAUS/YTS user’s guide also linked to the home page.

Screening Out Unusable Surveys

There were several questions in the MYDAUS/YTS that were used to detect surveys that were answered untruthfully (usually 3-4% of the total). These surveys were not included in the data available on the MYDAUS website.

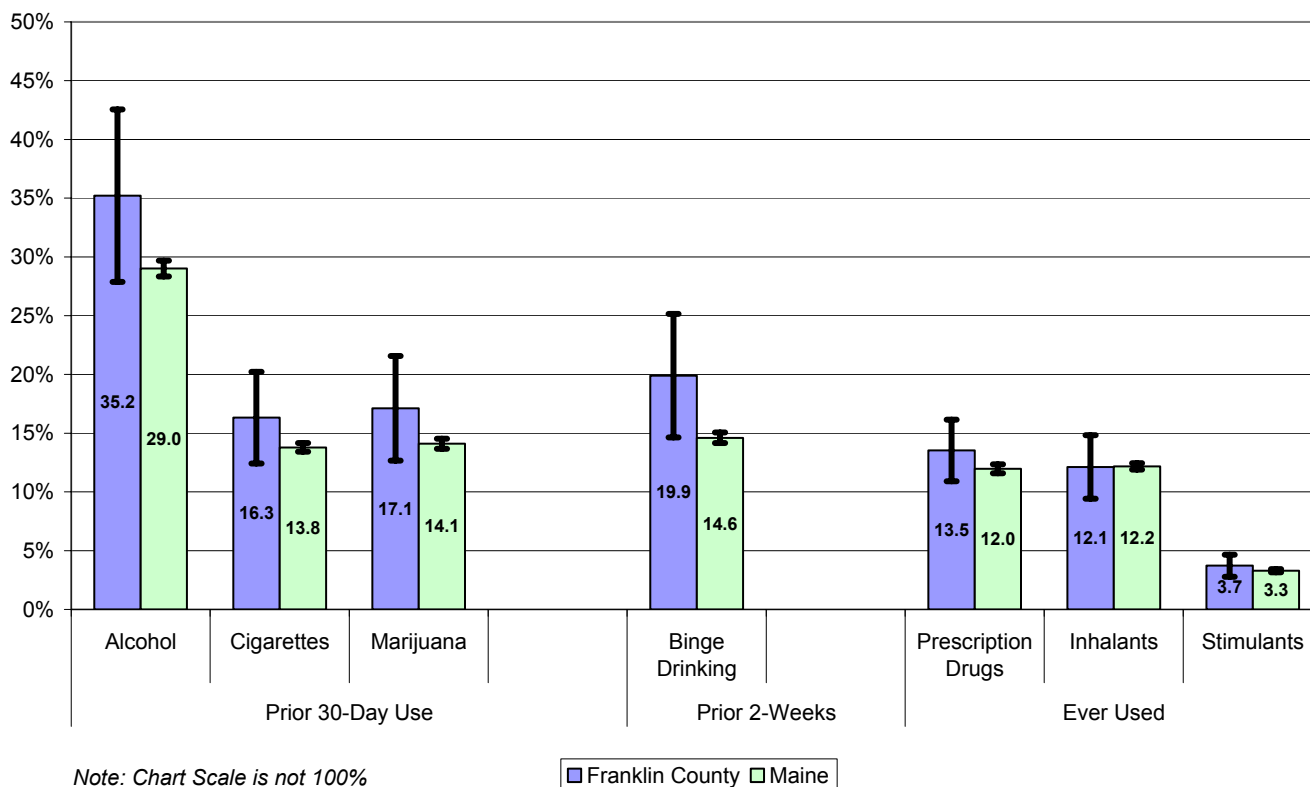
**Participation by Grade as Percentage of Enrollment
Franklin County, 2006**



**Participation by Grade as Percentage of Enrollment
Franklin County, 2006**

	6 th	7 th	8 th	9 th	10 th	11 th	12 th	Total
Number Enrolled	353	372	399	399	397	365	380	2,665
Number Participating	241	239	245	235	233	207	170	1,592
Percent Participating	68%	64%	61%	59%	59%	57%	45%	60%

Summary of SUBSTANCE USE Franklin County vs Maine, Grades 6 - 12, 2006



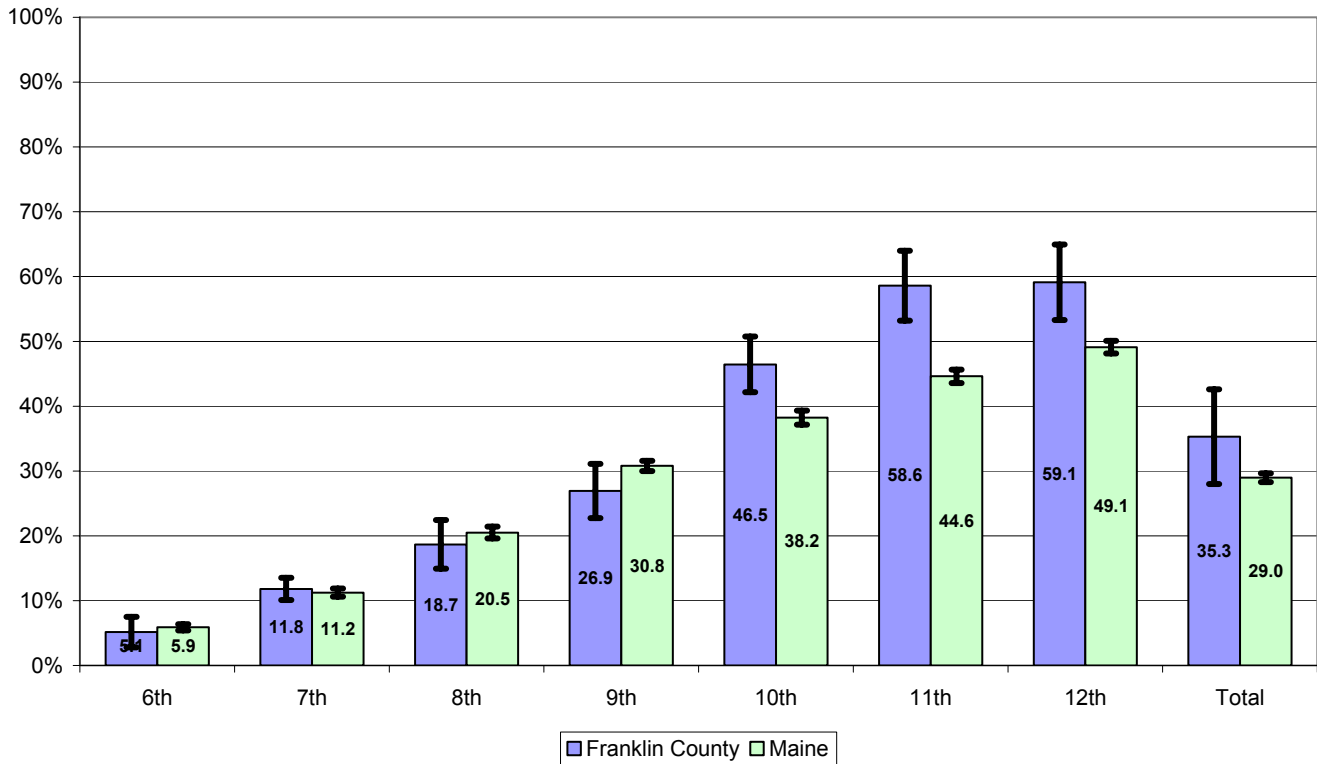
Summary of SUBSTANCE USE Franklin County vs Maine, Grades 6-12, 2006

		Franklin County			Maine			Sig Diff
		LCL	%	UCL	LCL	%	UCL	
Prior 30-Day Use	Alcohol	27.9%	35.2%	42.6%	28.3%	29.0%	29.7%	
	Cigarettes	12.4%	16.3%	20.2%	13.4%	13.8%	14.2%	
	Marijuana	12.7%	17.1%	21.6%	13.7%	14.1%	14.5%	
Prior 2-Weeks	Binge Drinking	14.6%	19.9%	25.2%	14.2%	14.6%	15.1%	
Ever Used	Prescription Drugs	10.9%	13.5%	16.1%	11.6%	12.0%	12.4%	
	Inhalants	9.4%	12.1%	14.8%	11.9%	12.2%	12.4%	
	Stimulants	2.8%	3.7%	4.7%	3.2%	3.3%	3.4%	

LCL: 95% Lower confidence limit. HCL: 95% Upper confidence limit.

Sig Diff: Significant difference at 95% confidence, where plus (+) is higher and minus (-) is lower.

**ALCOHOL - Prior 30-Day Use
Franklin County vs Maine, by Grade, 2006**



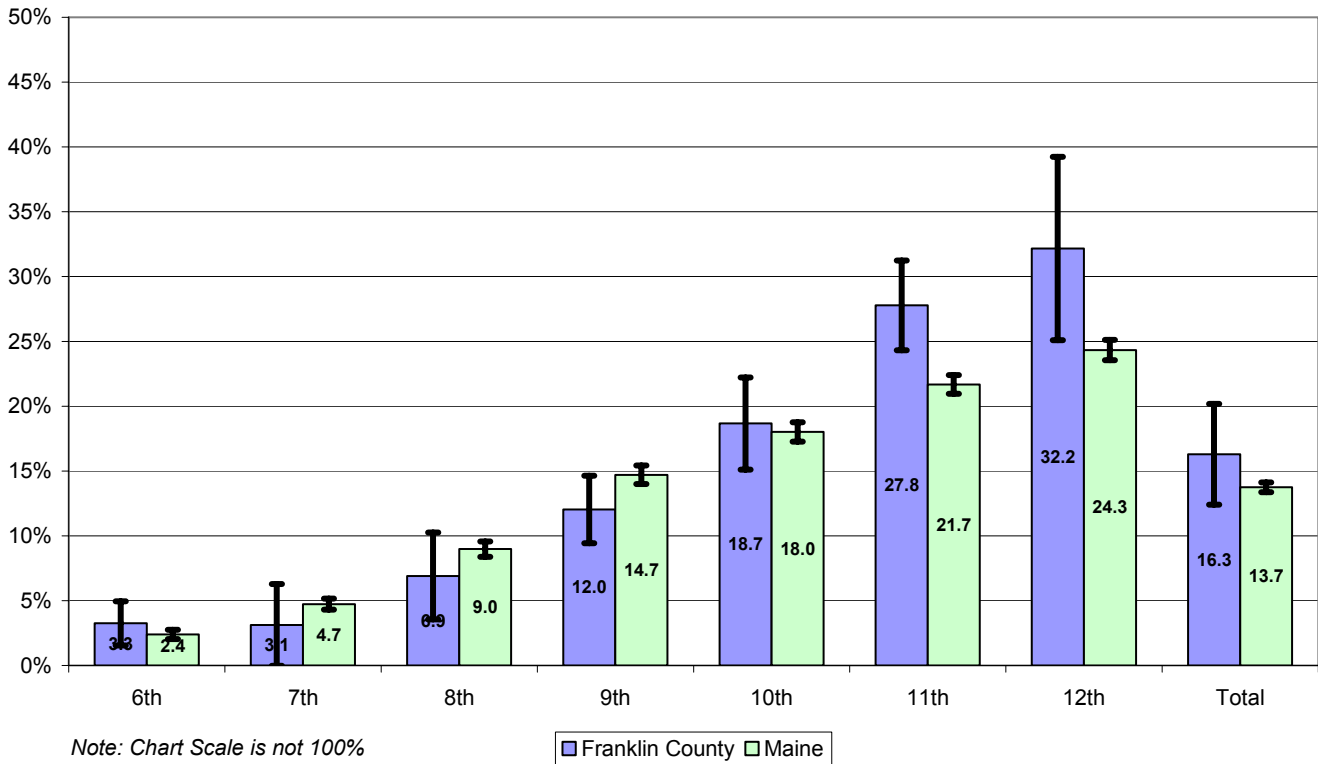
**ALCOHOL - Prior 30-Day Use
Franklin County vs Maine, by Grade, 2006**

Grade	Franklin County			Maine			Sig Diff
	LCL	%	UCL	LCL	%	UCL	
6th	2.8%	5.1%	7.5%	5.4%	5.9%	6.4%	
7th	10.1%	11.8%	13.5%	10.6%	11.2%	11.9%	
8th	14.9%	18.7%	22.4%	19.6%	20.5%	21.4%	
9th	22.7%	26.9%	31.1%	30.0%	30.8%	31.6%	
10th	42.1%	46.5%	50.8%	37.2%	38.2%	39.3%	+
11th	53.2%	58.6%	64.0%	43.6%	44.6%	45.6%	+
12th	53.3%	59.1%	64.9%	48.1%	49.1%	50.1%	+
Total	28.0%	35.3%	42.6%	28.3%	29.0%	29.7%	

LCL: 95% Lower confidence limit. HCL: 95% Upper confidence limit.

Sig Diff: Significant difference at 95% confidence, where plus (+) is higher and minus (-) is lower.

**CIGARETTES - Prior 30-Day Use
Franklin County vs Maine, by Grade, 2006**



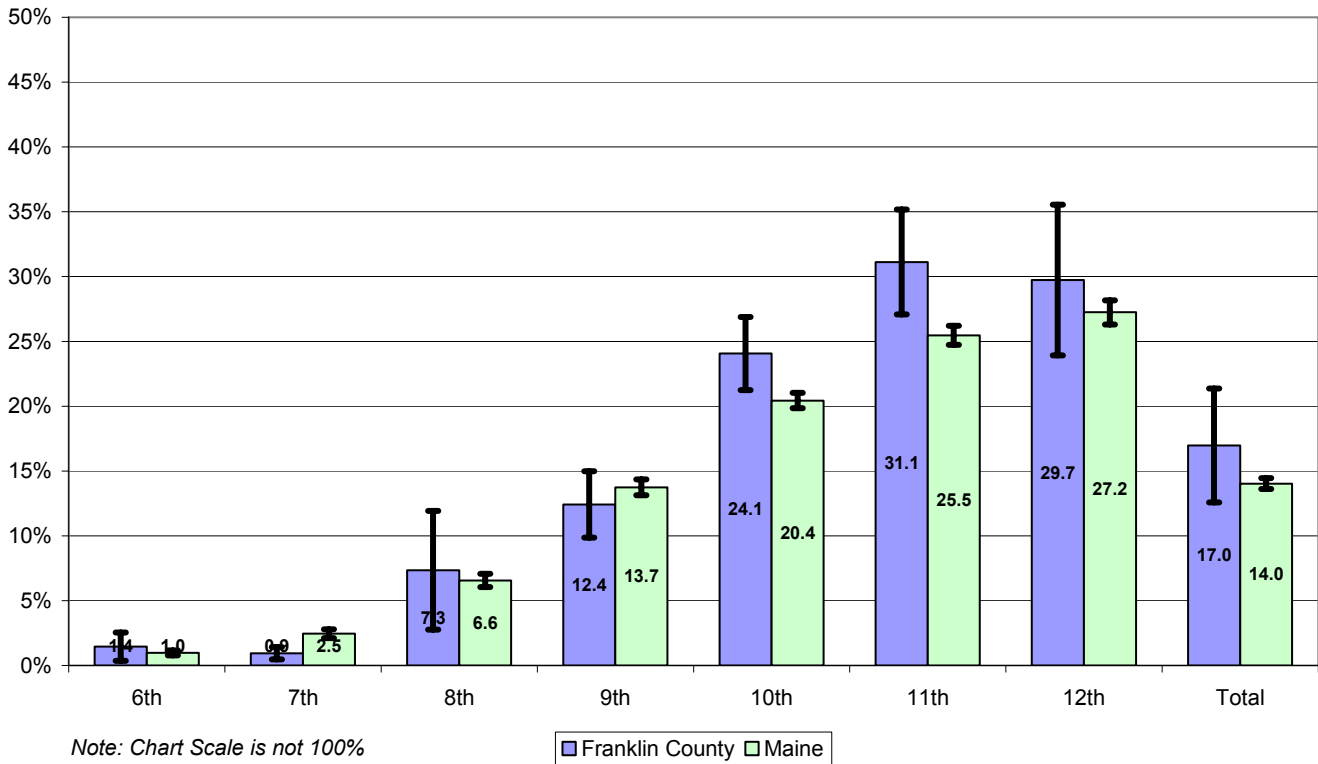
**CIGARETTES - Prior 30-Day Use
Franklin County vs Maine, by Grade, 2006**

Grade	Franklin County			Maine			Sig Diff
	LCL	%	UCL	LCL	%	UCL	
6th	1.5%	3.3%	5.0%	2.0%	2.4%	2.8%	
7th	0.0%	3.1%	6.3%	4.3%	4.7%	5.1%	
8th	3.5%	6.9%	10.3%	8.4%	9.0%	9.6%	
9th	9.4%	12.0%	14.6%	14.0%	14.7%	15.4%	
10th	15.1%	18.7%	22.2%	17.3%	18.0%	18.8%	
11th	24.3%	27.8%	31.2%	21.0%	21.7%	22.4%	+
12th	25.1%	32.2%	39.2%	23.5%	24.3%	25.1%	
Total	12.4%	16.3%	20.2%	13.4%	13.7%	14.1%	

LCL: 95% Lower confidence limit. HCL: 95% Upper confidence limit.

Sig Diff: Significant difference at 95% confidence, where plus (+) is higher and minus (-) is lower.

**MARIJUANA - Prior 30-Day Use
Franklin County vs Maine, by Grade, 2006**



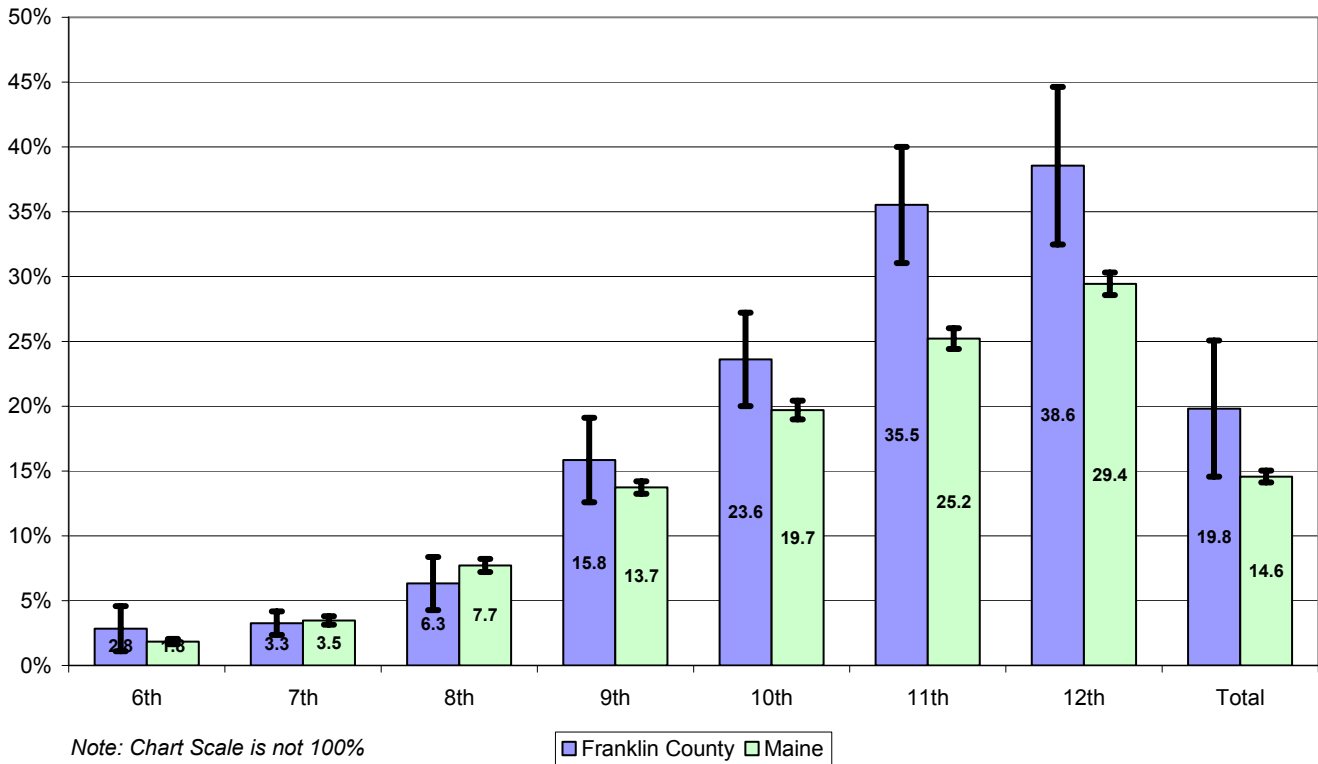
**MARIJUANA - Prior 30-Day Use
Franklin County vs Maine, by Grade, 2006**

Grade	Franklin County			Maine			Sig Diff
	LCL	%	UCL	LCL	%	UCL	
6th	0.4%	1.4%	2.5%	0.8%	1.0%	1.2%	
7th	0.5%	0.9%	1.4%	2.1%	2.5%	2.8%	-
8th	2.8%	7.3%	11.9%	6.0%	6.6%	7.1%	
9th	9.9%	12.4%	15.0%	13.1%	13.7%	14.3%	
10th	21.2%	24.1%	26.9%	19.8%	20.4%	21.0%	+
11th	27.1%	31.1%	35.2%	24.7%	25.5%	26.2%	+
12th	23.9%	29.7%	35.5%	26.3%	27.2%	28.2%	
Total	12.6%	17.0%	21.4%	13.6%	14.0%	14.5%	

LCL: 95% Lower confidence limit. HCL: 95% Upper confidence limit.

Sig Diff: Significant difference at 95% confidence, where plus (+) is higher and minus (-) is lower.

**BINGE DRINKING - Prior 2 Weeks
Franklin County vs Maine, by Grade, 2006**



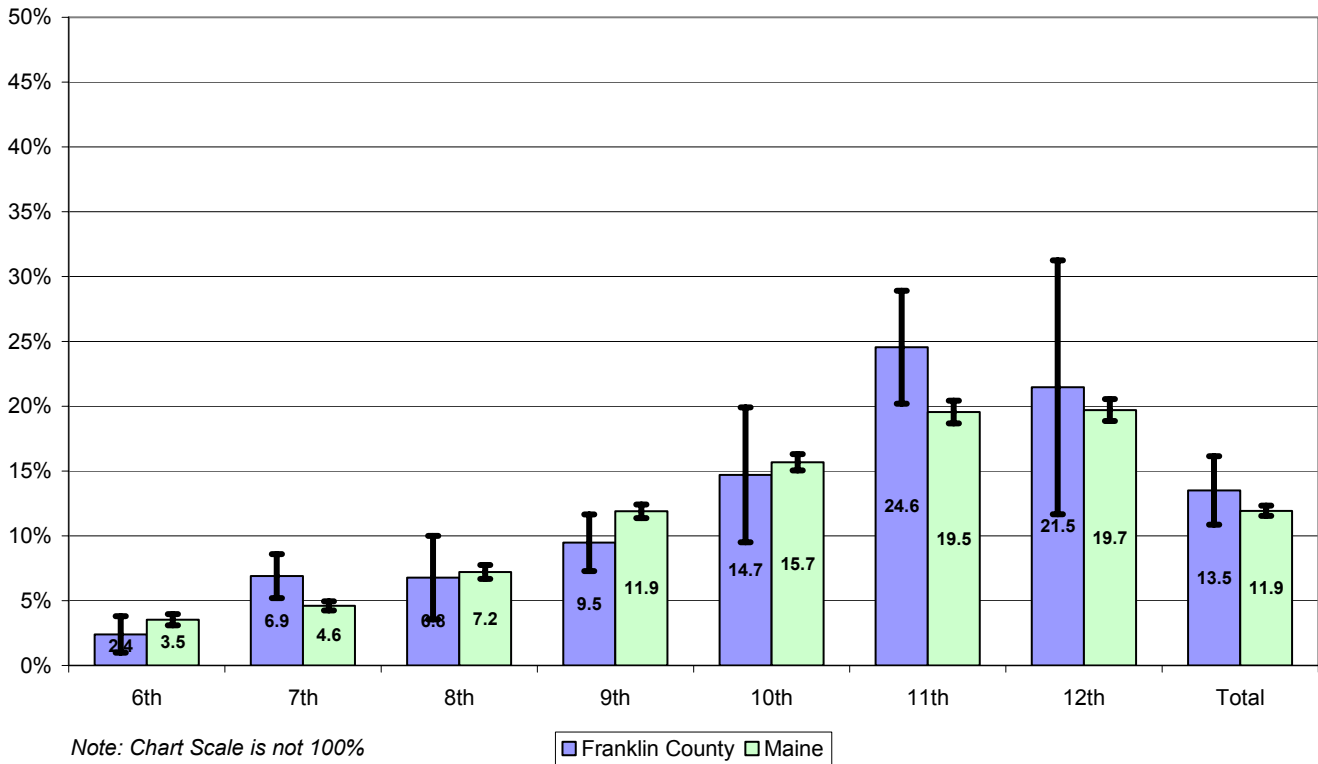
**BINGE DRINKING - Prior 2 Weeks
Franklin County vs Maine, by Grade, 2006**

Grade	Franklin County			Maine			Sig Diff
	LCL	%	UCL	LCL	%	UCL	
6th	1.1%	2.8%	4.6%	1.6%	1.8%	2.1%	
7th	2.4%	3.3%	4.2%	3.1%	3.5%	3.8%	
8th	4.3%	6.3%	8.4%	7.2%	7.7%	8.2%	
9th	12.6%	15.8%	19.1%	13.2%	13.7%	14.2%	
10th	20.0%	23.6%	27.2%	19.0%	19.7%	20.4%	
11th	31.0%	35.5%	40.0%	24.4%	25.2%	26.0%	+
12th	32.5%	38.6%	44.6%	28.6%	29.4%	30.3%	+
Total	14.6%	19.8%	25.1%	14.1%	14.6%	15.0%	

LCL: 95% Lower confidence limit. HCL: 95% Upper confidence limit.

Sig Diff: Significant difference at 95% confidence, where plus (+) is higher and minus (-) is lower.

**PRESCRIPTION DRUGS - Ever Used
Franklin County vs Maine, by Grade, 2006**

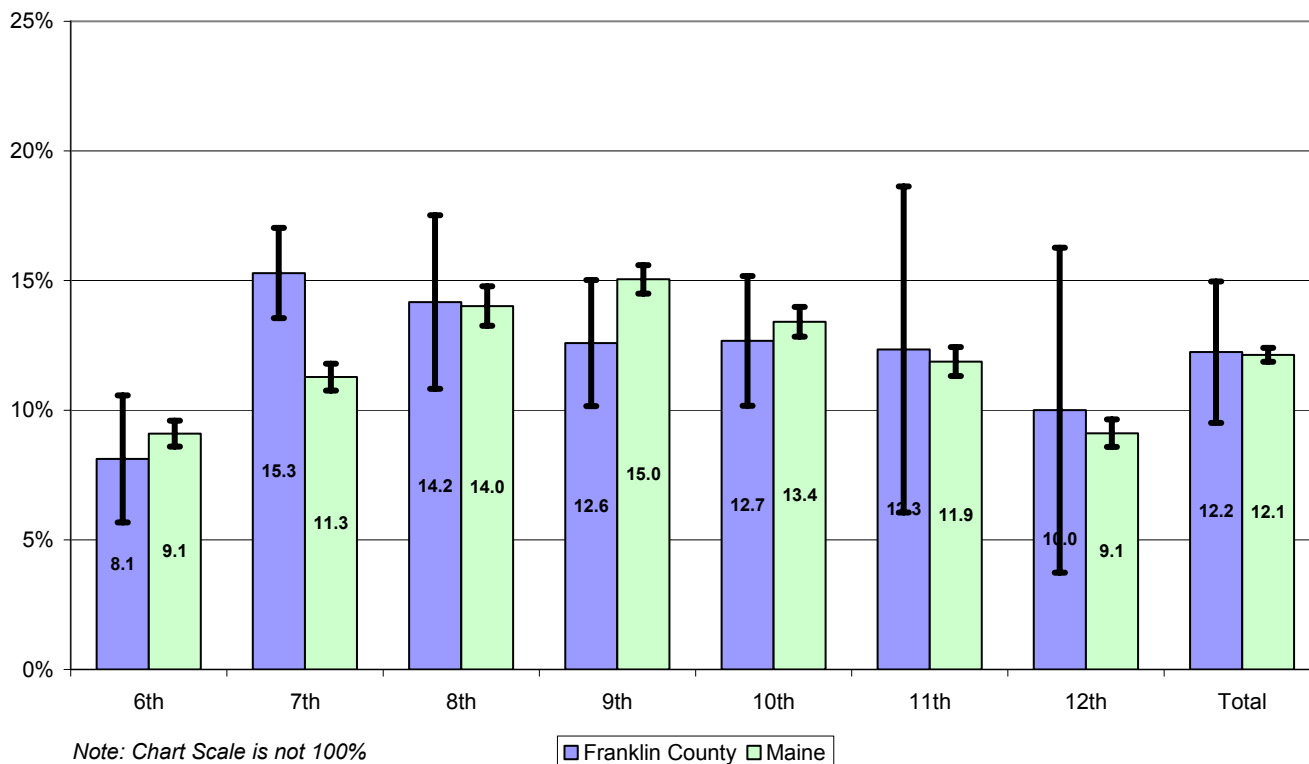


**PRESCRIPTION DRUGS - Ever Used
Franklin County vs Maine, by Grade, 2006**

Grade	Franklin County			Maine			Sig Diff
	LCL	%	UCL	LCL	%	UCL	
6th	1.0%	2.4%	3.8%	3.1%	3.5%	4.0%	
7th	5.2%	6.9%	8.6%	4.2%	4.6%	5.0%	+
8th	3.5%	6.8%	10.0%	6.7%	7.2%	7.7%	
9th	7.3%	9.5%	11.6%	11.4%	11.9%	12.4%	
10th	9.5%	14.7%	19.9%	15.0%	15.7%	16.3%	
11th	20.2%	24.6%	28.9%	18.7%	19.5%	20.4%	
12th	11.7%	21.5%	31.2%	18.9%	19.7%	20.5%	
Total	10.9%	13.5%	16.1%	11.5%	11.9%	12.3%	

*LCL: 95% Lower confidence limit. HCL: 95% Upper confidence limit.
Sig Diff: Significant difference at 95% confidence, where plus (+) is higher and minus (-) is lower.*

**INHALANTS - Ever Used
Franklin County vs Maine, by Grade, 2006**

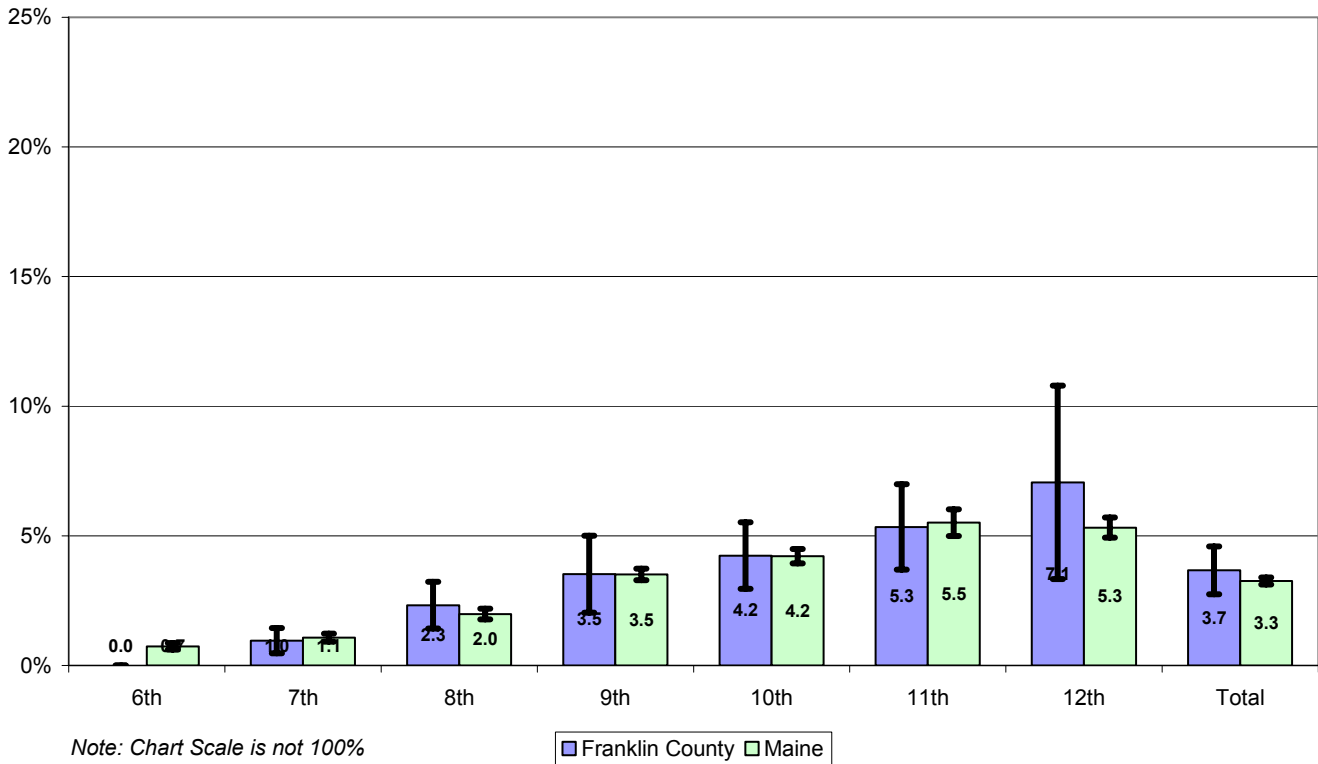


**INHALANTS - Ever Used
Franklin County vs Maine, by Grade, 2006**

Grade	Franklin County			Maine			Sig Diff
	LCL	%	UCL	LCL	%	UCL	
6th	5.7%	8.1%	10.6%	8.6%	9.1%	9.6%	
7th	13.6%	15.3%	17.0%	10.8%	11.3%	11.8%	+
8th	10.8%	14.2%	17.5%	13.3%	14.0%	14.8%	
9th	10.2%	12.6%	15.0%	14.5%	15.0%	15.6%	
10th	10.2%	12.7%	15.2%	12.8%	13.4%	14.0%	
11th	6.1%	12.3%	18.6%	11.3%	11.9%	12.4%	
12th	3.7%	10.0%	16.3%	8.6%	9.1%	9.6%	
Total	9.5%	12.2%	15.0%	11.9%	12.1%	12.4%	

*LCL: 95% Lower confidence limit. HCL: 95% Upper confidence limit.
Sig Diff: Significant difference at 95% confidence, where plus (+) is higher and minus (-) is lower.*

**STIMULANTS - Ever Used
Franklin County vs Maine, by Grade, 2006**

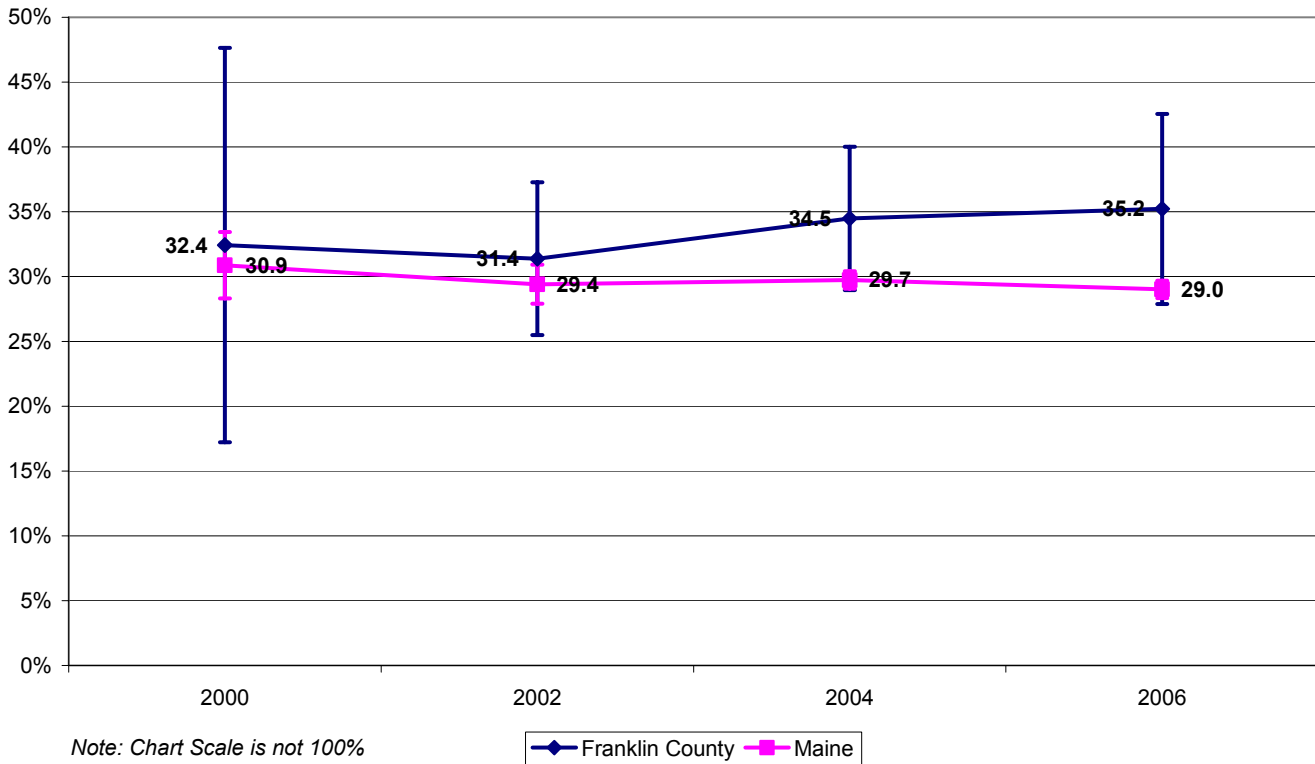


**STIMULANTS - Ever Used
Franklin County vs Maine, by Grade, 2006**

Grade	Franklin County			Maine			Sig Diff
	LCL	%	UCL	LCL	%	UCL	
6th	0.0%	0.0%	0.0%	0.6%	0.7%	0.9%	-
7th	0.5%	1.0%	1.4%	0.9%	1.1%	1.2%	
8th	1.4%	2.3%	3.2%	1.8%	2.0%	2.2%	
9th	2.0%	3.5%	5.0%	3.3%	3.5%	3.7%	
10th	3.0%	4.2%	5.5%	3.9%	4.2%	4.5%	
11th	3.7%	5.3%	7.0%	5.0%	5.5%	6.0%	
12th	3.3%	7.1%	10.8%	4.9%	5.3%	5.7%	
Total	2.7%	3.7%	4.6%	3.1%	3.3%	3.4%	

*LCL: 95% Lower confidence limit. HCL: 95% Upper confidence limit.
Sig Diff: Significant difference at 95% confidence, where plus (+) is higher and minus (-) is lower.*

ALCOHOL - Trend in Prior 30-Day Use Franklin County vs Maine



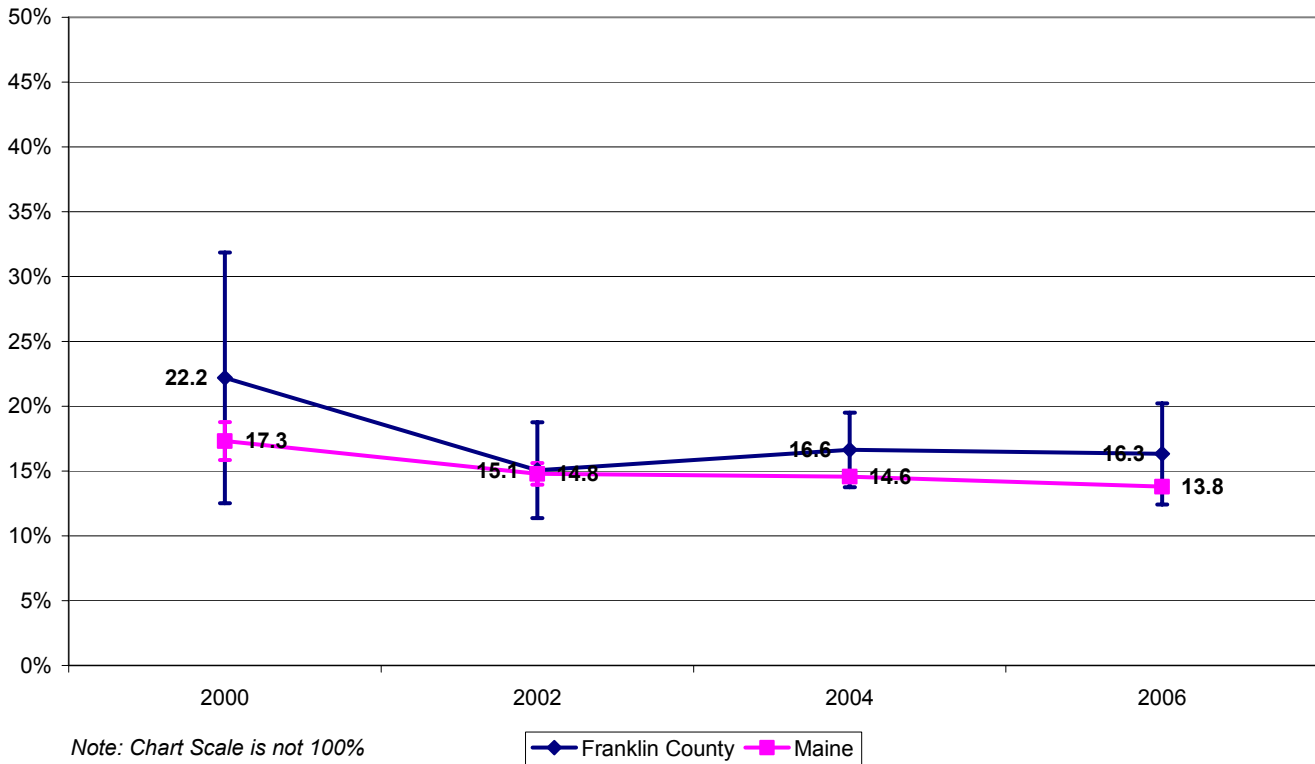
ALCOHOL - Trend in Prior 30-Day Use Franklin County vs Maine

Year	Franklin County			Maine			Sig Diff
	LCL	%	UCL	LCL	%	UCL	
2000	17.2%	32.4%	47.6%	28.3%	30.9%	33.4%	
2002	25.5%	31.4%	37.3%	27.9%	29.4%	30.9%	
2004	29.0%	34.5%	40.0%	29.1%	29.7%	30.4%	
2006	27.9%	35.2%	42.6%	28.3%	29.0%	29.7%	

LCL: 95% Lower confidence limit. HCL: 95% Upper confidence limit.

Sig Diff: Significant difference at 95% confidence, where plus (+) is higher and minus (-) is lower.

CIGARETTES - Trend in Prior 30-Day Use Franklin County vs Maine



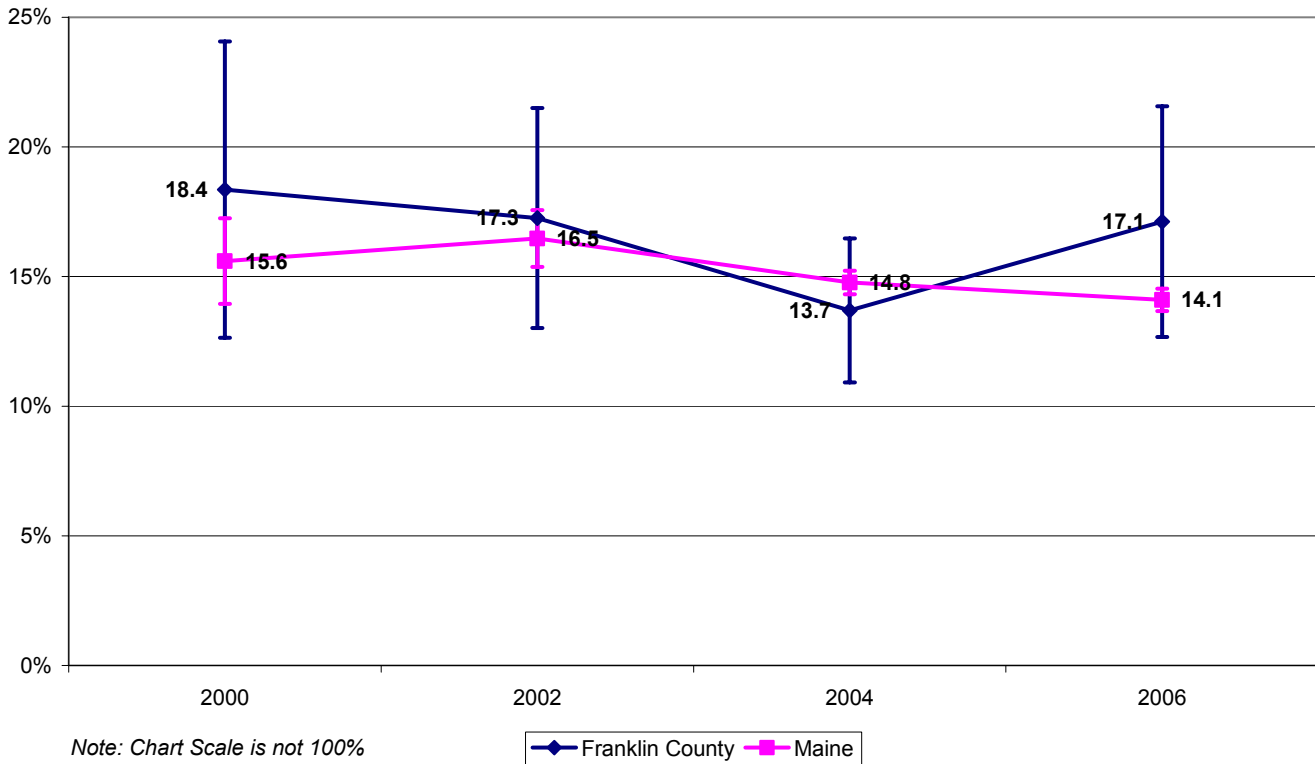
CIGARETTES - Trend in Prior 30-Day Use Franklin County vs Maine

Year	Franklin County			Maine			Sig Diff
	LCL	%	UCL	LCL	%	UCL	
2000	12.5%	22.2%	31.9%	15.8%	17.3%	18.8%	
2002	11.4%	15.1%	18.8%	13.9%	14.8%	15.6%	
2004	13.7%	16.6%	19.5%	14.2%	14.6%	14.9%	
2006	12.4%	16.3%	20.2%	13.4%	13.8%	14.2%	

LCL: 95% Lower confidence limit. HCL: 95% Upper confidence limit.

Sig Diff: Significant difference at 95% confidence, where plus (+) is higher and minus (-) is lower.

MARIJUANA - Trend in Prior 30-Day Use Franklin County vs Maine



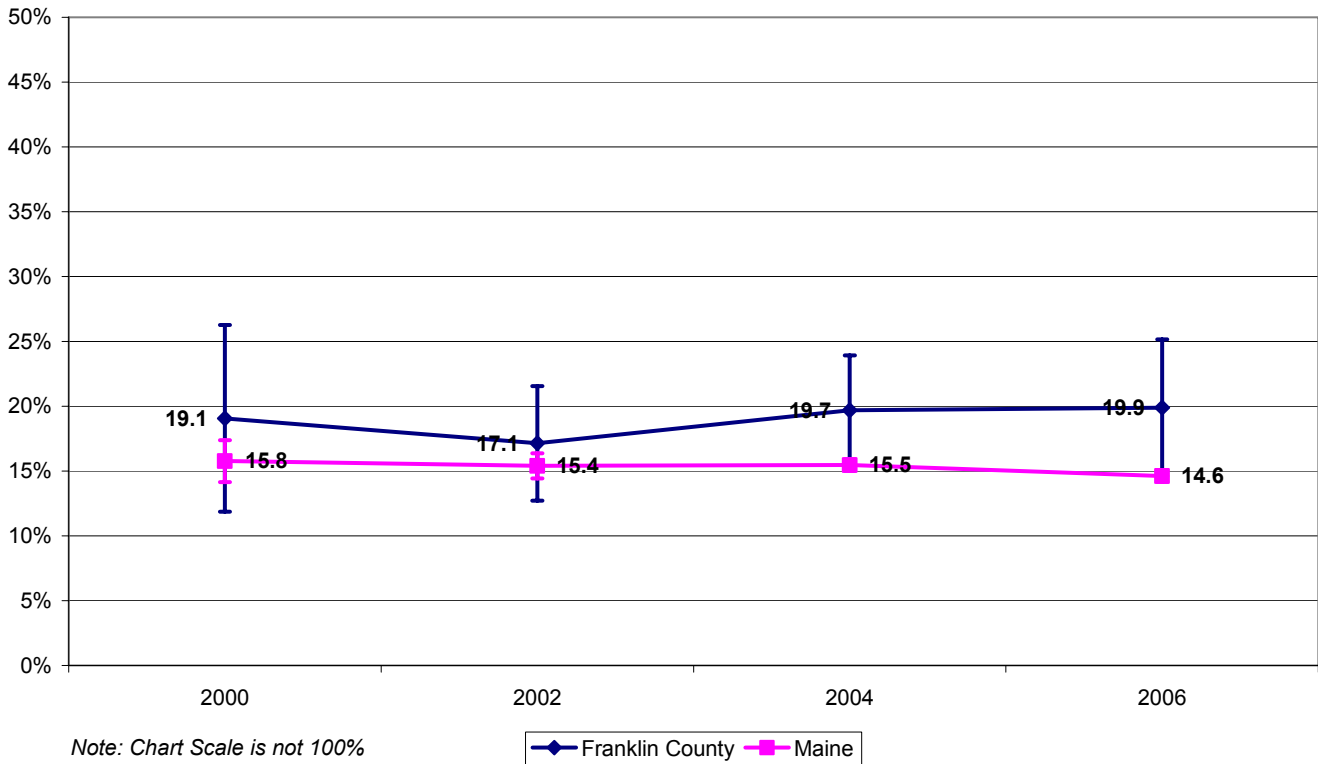
MARIJUANA - Trend in Prior 30-Day Use Franklin County vs Maine

Year	Franklin County			Maine			Sig Diff
	LCL	%	UCL	LCL	%	UCL	
2000	12.6%	18.4%	24.1%	13.9%	15.6%	17.2%	
2002	13.0%	17.3%	21.5%	15.4%	16.5%	17.6%	
2004	10.9%	13.7%	16.5%	14.3%	14.8%	15.2%	
2006	12.7%	17.1%	21.6%	13.7%	14.1%	14.5%	

LCL: 95% Lower confidence limit. HCL: 95% Upper confidence limit.

Sig Diff: Significant difference at 95% confidence, where plus (+) is higher and minus (-) is lower.

BINGE DRINKING - Trend in Prior 2 Weeks Franklin County vs Maine



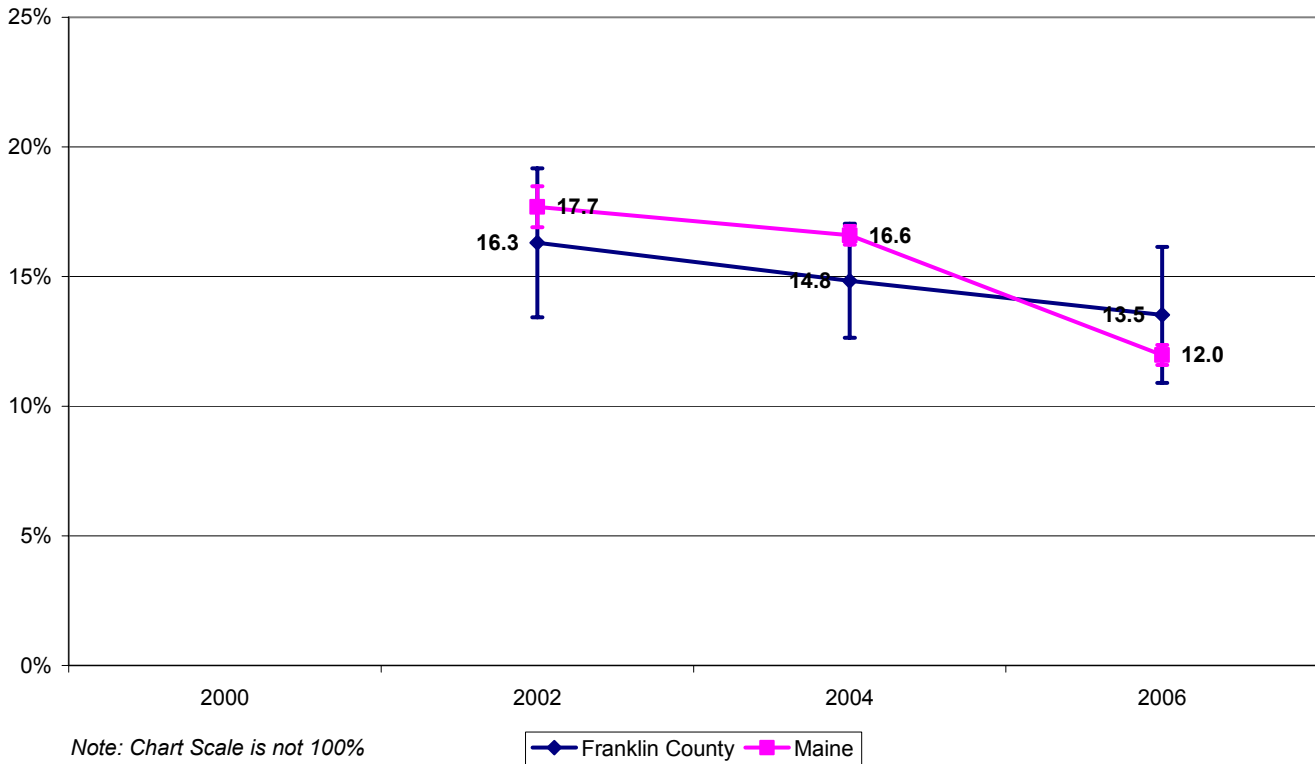
BINGE DRINKING - Trend in Prior 2 Weeks Franklin County vs Maine

Year	Franklin County			Maine			Sig Diff
	LCL	%	UCL	LCL	%	UCL	
2000	11.9%	19.1%	26.3%	14.2%	15.8%	17.4%	
2002	12.7%	17.1%	21.6%	14.4%	15.4%	16.4%	
2004	15.5%	19.7%	23.9%	15.0%	15.5%	15.9%	
2006	14.6%	19.9%	25.2%	14.2%	14.6%	15.1%	

LCL: 95% Lower confidence limit. HCL: 95% Upper confidence limit.

Sig Diff: Significant difference at 95% confidence, where plus (+) is higher and minus (-) is lower.

PRESCRIPTION DRUGS - Trend in Ever Used Franklin County vs Maine



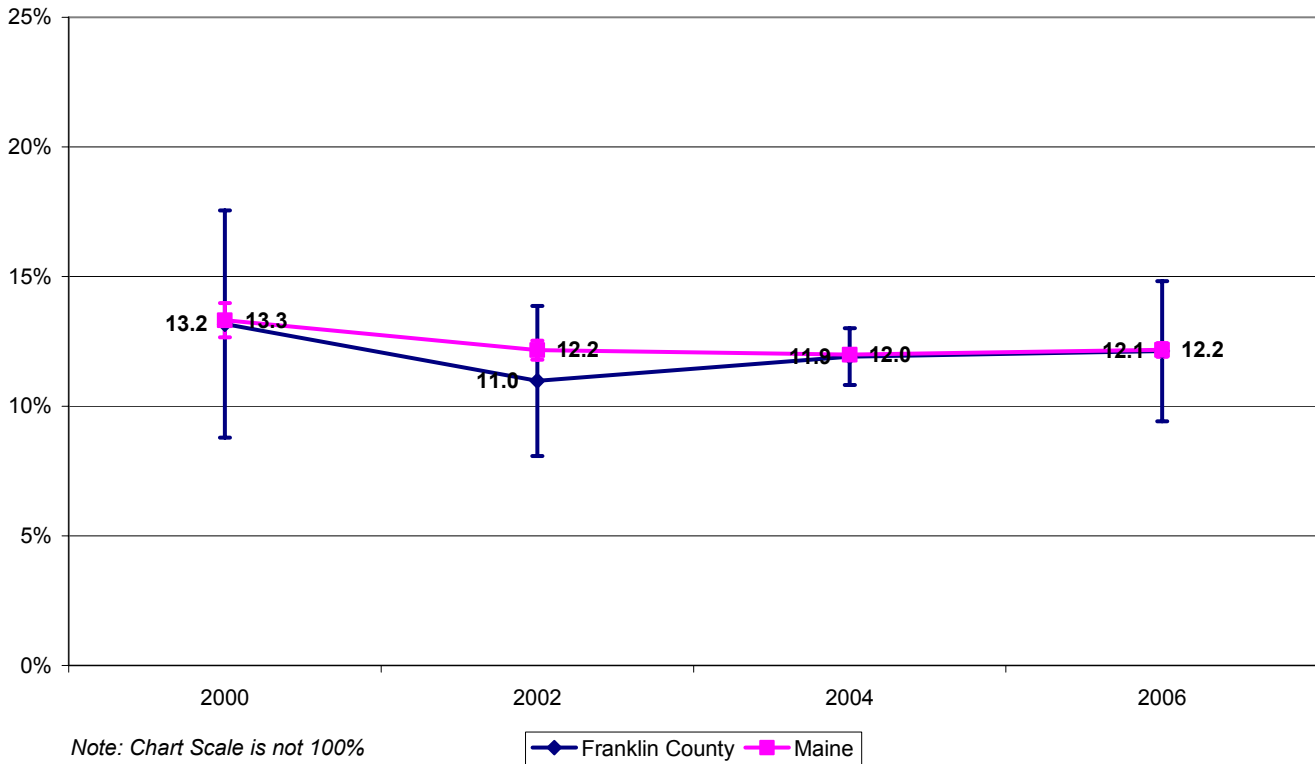
PRESCRIPTION DRUGS - Trend in Ever Used Franklin County vs Maine

Year	Franklin County			Maine			Sig Diff
	LCL	%	UCL	LCL	%	UCL	
2000	-	-	-	-	-	-	
2002	13.4%	16.3%	19.2%	16.9%	17.7%	18.5%	
2004	12.6%	14.8%	17.0%	16.2%	16.6%	17.0%	
2006	10.9%	13.5%	16.1%	11.6%	12.0%	12.4%	

LCL: 95% Lower confidence limit. HCL: 95% Upper confidence limit.

Sig Diff: Significant difference at 95% confidence, where plus (+) is higher and minus (-) is lower.

INHALANTS - Trend in Ever Used Franklin County vs Maine



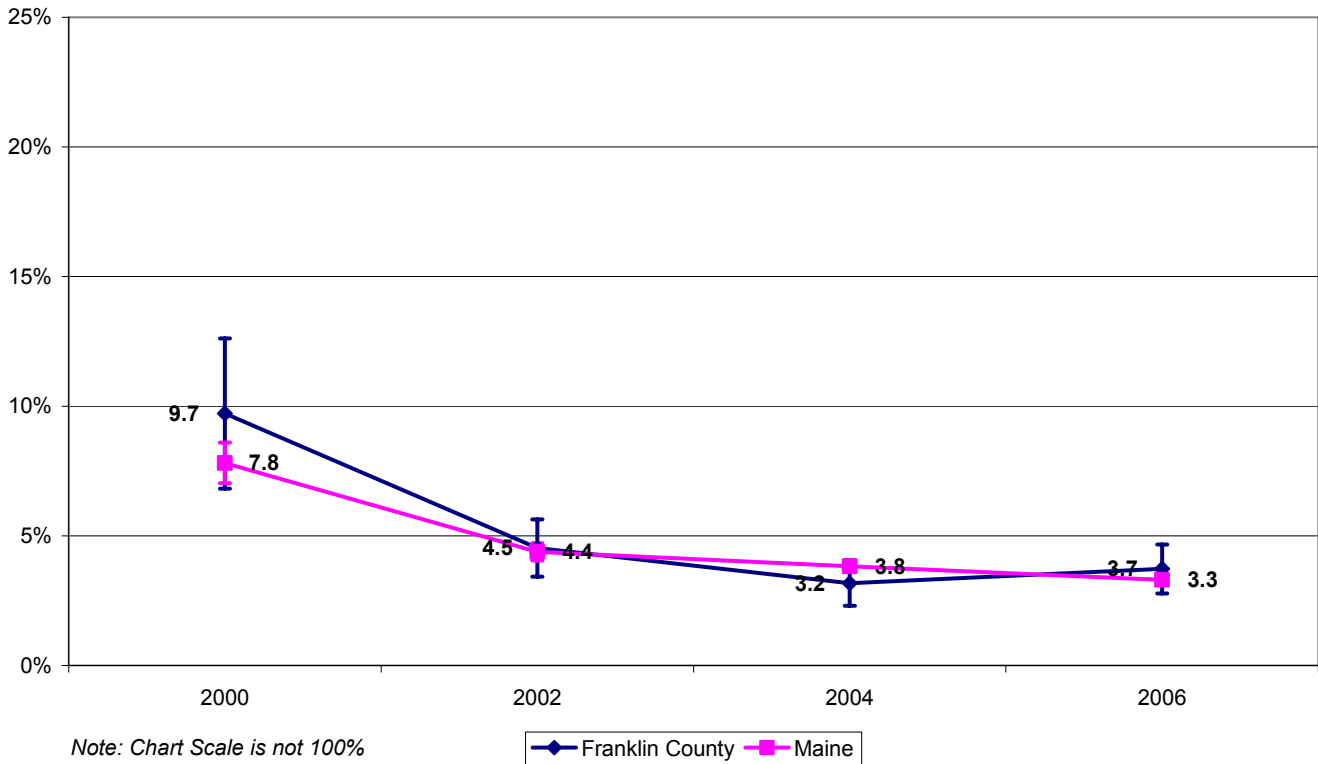
INHALANTS - Trend in Ever Used Franklin County vs Maine

Year	Franklin County			Maine			Sig Diff
	LCL	%	UCL	LCL	%	UCL	
2000	8.8%	13.2%	17.5%	12.7%	13.3%	14.0%	
2002	8.1%	11.0%	13.9%	11.8%	12.2%	12.5%	
2004	10.8%	11.9%	13.0%	11.8%	12.0%	12.2%	
2006	9.4%	12.1%	14.8%	11.9%	12.2%	12.4%	

LCL: 95% Lower confidence limit. HCL: 95% Upper confidence limit.

Sig Diff: Significant difference at 95% confidence, where plus (+) is higher and minus (-) is lower.

STIMULANTS - Trend in Ever Used Franklin County vs Maine



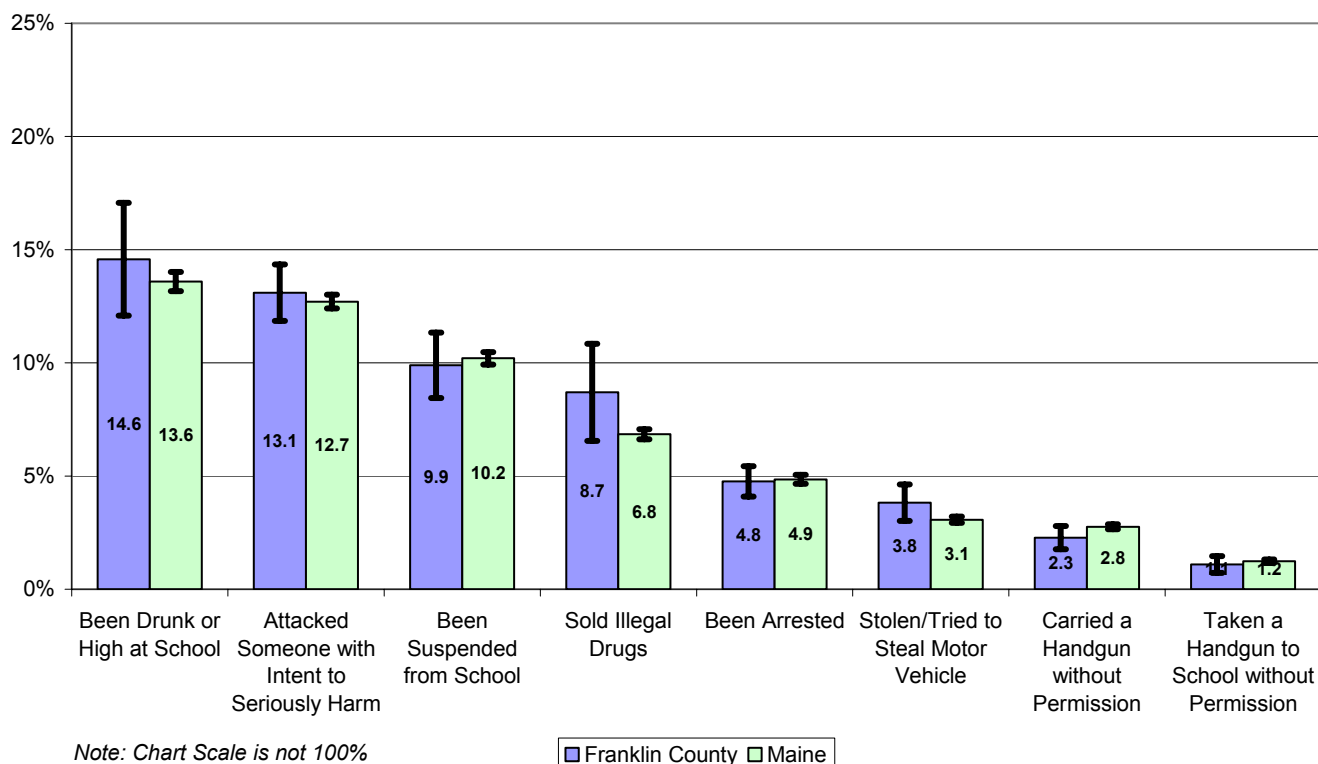
STIMULANTS - Trend in Ever Used Franklin County vs Maine

Year	Franklin County			Maine			Sig Diff
	LCL	%	UCL	LCL	%	UCL	
2000	6.8%	9.7%	12.6%	7.0%	7.8%	8.6%	
2002	3.4%	4.5%	5.6%	4.0%	4.4%	4.7%	
2004	2.3%	3.2%	4.0%	3.7%	3.8%	4.0%	
2006	2.8%	3.7%	4.7%	3.2%	3.3%	3.4%	

LCL: 95% Lower confidence limit. HCL: 95% Upper confidence limit.

Sig Diff: Significant difference at 95% confidence, where plus (+) is higher and minus (-) is lower.

**PROHIBITED BEHAVIORS, Prevalence during Prior Year
Franklin County vs Maine, Grades 6-12, 2006**



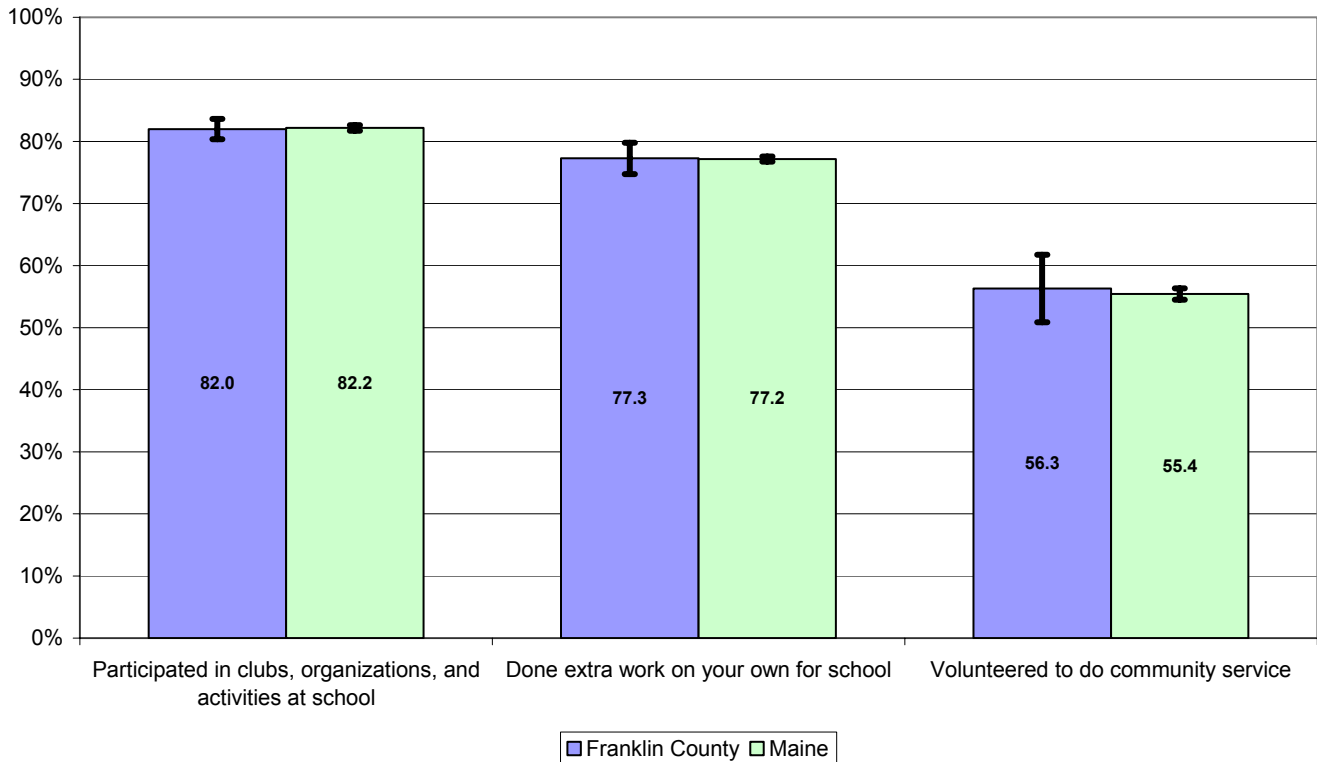
**PROHIBITED BEHAVIORS, Prevalence during Prior Year
Franklin County vs Maine, Grades 6-12, 2006**

Behavior	Franklin County			Maine			Sig Diff
	LCL	%	UCL	LCL	%	UCL	
Been Drunk or High at School	12.1%	14.6%	17.1%	13.2%	13.6%	14.0%	
Attacked Someone with Intent to Seriously Harm	11.9%	13.1%	14.3%	12.4%	12.7%	13.0%	
Been Suspended from School	8.4%	9.9%	11.3%	9.9%	10.2%	10.5%	
Sold Illegal Drugs	6.6%	8.7%	10.8%	6.6%	6.8%	7.1%	
Been Arrested	4.1%	4.8%	5.4%	4.7%	4.9%	5.1%	
Stolen/Tried to Steal Motor Vehicle	3.0%	3.8%	4.6%	2.9%	3.1%	3.2%	
Carried a Handgun without Permission	1.8%	2.3%	2.8%	2.6%	2.8%	2.9%	
Taken a Handgun to School without Permission	0.7%	1.1%	1.5%	1.2%	1.2%	1.3%	

LCL: 95% Lower confidence limit. HCL: 95% Upper confidence limit.

Sig Diff: Significant difference at 95% confidence, where plus (+) is higher and minus (-) is lower.

**PRO-SOCIAL BEHAVIORS - Prevalence during Prior Year
Franklin County vs Maine, Grades 6-12, 2006**



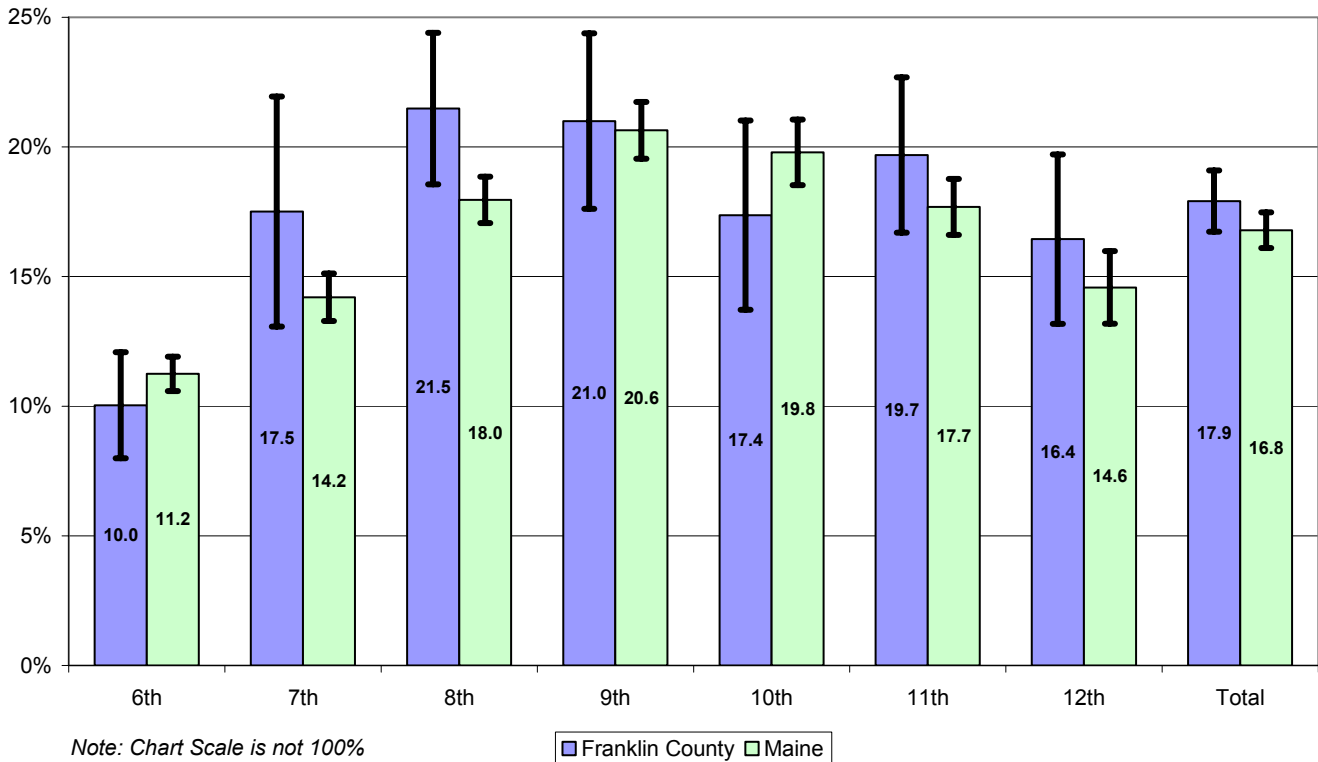
**PRO-SOCIAL BEHAVIORS - Prevalence during Prior Year
Franklin County vs Maine, Grades 6-12, 2006**

Behavior	Franklin County			Maine			Sig Diff
	LCL	%	UCL	LCL	%	UCL	
Participated in clubs, organizations, and activities at school	80.3%	82.0%	83.6%	81.7%	82.2%	82.6%	
Done extra work on your own for school	74.8%	77.3%	79.8%	76.7%	77.2%	77.6%	
Volunteered to do community service	50.9%	56.3%	61.8%	54.5%	55.4%	56.4%	

LCL: 95% Lower confidence limit. HCL: 95% Upper confidence limit.

Sig Diff: Significant difference at 95% confidence, where plus (+) is higher and minus (-) is lower.

**Prevalence of Students Feeling Unsafe at School
Franklin County vs Maine, by Grade, 2006**



**Prevalence of Students Feeling Unsafe at School
Franklin County vs Maine, by Grade, 2006**

Grade	Franklin County			Maine			Sig Diff
	LCL	%	UCL	LCL	%	UCL	
6th	8.0%	10.0%	12.1%	10.6%	11.2%	11.9%	
7th	13.1%	17.5%	21.9%	13.3%	14.2%	15.1%	
8th	18.6%	21.5%	24.4%	17.1%	18.0%	18.9%	
9th	17.6%	21.0%	24.4%	19.5%	20.6%	21.7%	
10th	13.7%	17.4%	21.0%	18.5%	19.8%	21.1%	
11th	16.7%	19.7%	22.7%	16.6%	17.7%	18.8%	
12th	13.2%	16.4%	19.7%	13.2%	14.6%	16.0%	
Total	16.7%	17.9%	19.1%	16.1%	16.8%	17.5%	

LCL: 95% Lower confidence limit. HCL: 95% Upper confidence limit.

Sig Diff: Significant difference at 95% confidence, where plus (+) is higher and minus (-) is lower.

**Prevalence of Students “At Risk” - Grade 6
Franklin County vs Maine, 2006**

Community Risk Factors	Franklin County			Maine			Sig Diff
	LCL	%	UCL	LCL	%	UCL	
Laws and Norms Favorable to Drug Use	24.3%	32.7%	41.1%	36.3%	37.4%	38.5%	
Perceived Availability of Drugs	17.9%	22.4%	26.9%	25.4%	26.1%	26.9%	
Perceived Availability of Handguns	16.4%	23.1%	29.8%	20.7%	21.3%	22.0%	
Family Risk Factors							
Poor Family Management	27.4%	32.1%	36.8%	33.6%	34.3%	35.1%	
Family History of Antisocial Behavior	21.9%	29.1%	36.3%	27.9%	29.1%	30.3%	
Parental Attitude Favorable to Drug Use*	8.3%	10.8%	13.4%	10.8%	11.3%	11.8%	
Parental Attitude Favorable to Antisocial Behavior*	22.8%	27.4%	32.0%	30.4%	31.2%	32.1%	
School Risk Factors							
Lower Academic Achievement	32.5%	36.8%	41.0%	41.3%	42.2%	43.0%	-
Low Commitment to School	45.4%	52.8%	60.1%	48.6%	49.7%	50.8%	
Peer/Individual Risk Factors							
Rebelliousness	32.7%	35.5%	38.4%	39.5%	40.6%	41.6%	-
Early Initiation of Drug Use	11.3%	16.9%	22.5%	20.2%	20.9%	21.6%	
Attitudes Favorable to Antisocial Behavior	36.1%	39.1%	42.2%	43.2%	44.4%	45.7%	-
Attitudes Favorable to Drug Use	11.9%	14.9%	17.9%	16.7%	17.3%	18.0%	
Intention to Use Drugs	39.9%	46.1%	52.4%	45.1%	46.0%	46.8%	
Perceived Risk of Drug Use	19.5%	21.9%	24.3%	21.7%	22.6%	23.4%	
Interaction with Antisocial Peers	23.9%	30.8%	37.6%	29.5%	30.7%	31.9%	
Friends' Use of Drugs	14.6%	17.8%	21.0%	19.0%	20.0%	20.9%	
Sensation Seeking	28.4%	36.8%	45.2%	40.8%	41.9%	43.0%	
Rewards for Antisocial Behavior	12.3%	16.3%	20.3%	21.1%	22.3%	23.4%	-

* “Favor” does not necessarily mean parents favor the activity. These items are the students’ perception of parental attitudes. Students may perceive their parents as believing the behavior or drug use is wrong, but if parents are not perceived as thinking it is “**very wrong**”, then the student is at increased risk of participating in the undesirable behavior. “Antisocial Behavior” refers to stealing something worth more than \$5, drawing graffiti, and picking a fight with someone. ”Drug use” refers to the use of alcohol, cigarettes, and marijuana.

**Prevalence of Students "Protected" - Grade 6
Franklin County vs Maine, 2006**

	Franklin County			Maine			Sig Diff
	LCL	%	UCL	LCL	%	UCL	
Community Protective Factors							
Community Opportunities for Positive Involvement	48.3%	51.8%	55.3%	51.2%	52.3%	53.4%	
Community Rewards for Positive Involvement	45.4%	49.2%	53.0%	48.5%	49.4%	50.3%	
Family Protective Factors							
Family Attachment	50.2%	54.2%	58.1%	56.8%	57.8%	58.9%	
Family Opportunities for Positive Involvement	59.1%	65.7%	72.3%	60.0%	60.9%	61.8%	
Family Rewards for Positive Involvement	52.6%	55.3%	58.0%	56.1%	57.0%	57.9%	
School Protective Factors							
School Opportunities for Positive Involvement	58.6%	62.4%	66.3%	61.3%	62.3%	63.3%	
School Rewards for Positive Involvement	52.3%	60.6%	68.9%	59.3%	60.8%	62.2%	
Peer/Individual Protective Factors							
Social Skills	73.8%	77.8%	81.8%	73.9%	74.9%	75.9%	
Belief in the Moral Order	63.2%	67.6%	72.1%	64.7%	66.0%	67.3%	

**Prevalence of Students “At Risk” - Grade 8
Franklin County vs Maine, 2006**

	Franklin County			Maine			Sig Diff
	LCL	%	UCL	LCL	%	UCL	
Community Risk Factors							
Laws and Norms Favorable to Drug Use	42.9%	45.4%	48.0%	37.1%	38.2%	39.3%	+
Perceived Availability of Drugs	24.4%	30.3%	36.2%	29.7%	30.7%	31.8%	
Perceived Availability of Handguns	32.8%	37.4%	42.0%	34.5%	35.4%	36.4%	
Family Risk Factors							
Poor Family Management	36.7%	40.7%	44.7%	41.9%	42.8%	43.7%	
Family History of Antisocial Behavior	29.8%	35.1%	40.5%	31.8%	32.8%	33.8%	
Parental Attitude Favorable to Drug Use*	28.3%	31.0%	33.7%	22.7%	23.5%	24.3%	+
Parental Attitude Favorable to Antisocial Behavior*	41.6%	49.7%	57.8%	45.3%	46.3%	47.3%	
School Risk Factors							
Lower Academic Achievement	42.0%	46.6%	51.3%	46.8%	47.8%	48.8%	
Low Commitment to School	45.3%	51.0%	56.7%	47.8%	49.1%	50.3%	
Peer/Individual Risk Factors							
Rebelliousness	31.3%	34.1%	37.0%	33.4%	34.3%	35.1%	
Early Initiation of Drug Use	22.9%	27.6%	32.3%	22.3%	23.3%	24.2%	
Attitudes Favorable to Antisocial Behavior	42.9%	46.5%	50.2%	40.6%	41.7%	42.8%	+
Attitudes Favorable to Drug Use	25.8%	30.2%	34.7%	27.0%	28.0%	28.9%	
Intention to Use Drugs	26.0%	33.2%	40.4%	29.2%	30.4%	31.6%	
Perceived Risk of Drug Use	29.7%	35.6%	41.4%	35.1%	36.1%	37.2%	
Interaction with Antisocial Peers	36.3%	43.8%	51.4%	44.3%	45.6%	47.0%	
Friends' Use of Drugs	34.4%	39.6%	44.9%	32.2%	33.4%	34.6%	
Sensation Seeking	44.7%	47.7%	50.6%	43.9%	44.9%	45.9%	
Rewards for Antisocial Behavior	37.0%	42.2%	47.4%	36.5%	37.8%	39.1%	

* “Favor” does not necessarily mean parents favor the activity. These items are the students’ perception of parental attitudes. Students may perceive their parents as believing the behavior or drug use is wrong, but if parents are not perceived as thinking it is “**very wrong**”, then the student is at increased risk of participating in the undesirable behavior. “Antisocial Behavior” refers to stealing something worth more than \$5, drawing graffiti, and picking a fight with someone. ”Drug use” refers to the use of alcohol, cigarettes, and marijuana.

**Prevalence of Students "Protected" - Grade 8
Franklin County vs Maine, 2006**

	Franklin County			Maine			Sig Diff
	LCL	%	UCL	LCL	%	UCL	
Community Protective Factors							
Community Opportunities for Positive Involvement	44.5%	51.4%	58.4%	46.9%	47.9%	48.9%	
Community Rewards for Positive Involvement	31.0%	33.4%	35.7%	32.6%	33.5%	34.5%	
Family Protective Factors							
Family Attachment	43.8%	48.1%	52.5%	50.3%	51.2%	52.1%	
Family Opportunities for Positive Involvement	61.3%	65.1%	68.9%	59.4%	60.3%	61.2%	+
Family Rewards for Positive Involvement	59.1%	61.1%	63.1%	61.8%	62.6%	63.5%	
School Protective Factors							
School Opportunities for Positive Involvement	62.9%	66.0%	69.1%	67.1%	68.3%	69.4%	
School Rewards for Positive Involvement	49.4%	53.7%	58.0%	57.5%	58.8%	60.0%	
Peer/Individual Protective Factors							
Social Skills	62.6%	65.0%	67.5%	64.9%	65.9%	66.9%	
Belief in the Moral Order	63.8%	66.8%	69.8%	61.6%	62.7%	63.8%	+

**Prevalence of Students “At Risk” - Grade 10
Franklin County vs Maine, 2006**

	Franklin County			Maine			Sig Diff
	LCL	%	UCL	LCL	%	UCL	
Community Risk Factors							
Laws and Norms Favorable to Drug Use	55.0%	59.2%	63.3%	49.5%	50.7%	51.8%	+
Perceived Availability of Drugs	41.1%	48.1%	55.2%	41.6%	42.7%	43.8%	
Perceived Availability of Handguns	17.5%	21.1%	24.6%	20.4%	21.2%	22.1%	
Family Risk Factors							
Poor Family Management	42.9%	47.0%	51.2%	43.1%	44.0%	44.9%	
Family History of Antisocial Behavior	43.3%	46.8%	50.2%	38.1%	39.1%	40.1%	+
Parental Attitude Favorable to Drug Use*	49.6%	53.5%	57.5%	42.1%	43.1%	44.1%	+
Parental Attitude Favorable to Antisocial Behavior*	53.1%	57.0%	60.9%	52.3%	53.4%	54.4%	
School Risk Factors							
Lower Academic Achievement	44.1%	48.8%	53.6%	46.5%	47.5%	48.5%	
Low Commitment to School	46.6%	50.1%	53.6%	47.3%	48.5%	49.7%	
Peer/Individual Risk Factors							
Rebelliousness	35.0%	38.2%	41.4%	39.6%	40.3%	40.9%	
Early Initiation of Drug Use	29.1%	34.4%	39.7%	30.6%	31.5%	32.4%	
Attitudes Favorable to Antisocial Behavior	52.6%	56.2%	59.8%	50.2%	51.3%	52.4%	+
Attitudes Favorable to Drug Use	46.6%	50.3%	53.9%	43.4%	44.3%	45.2%	+
Intention to Use Drugs	48.3%	53.2%	58.2%	46.2%	47.0%	47.8%	+
Perceived Risk of Drug Use	43.0%	47.1%	51.3%	43.0%	44.0%	44.9%	
Interaction with Antisocial Peers	52.0%	55.8%	59.6%	49.6%	50.6%	51.7%	+
Friends' Use of Drugs	38.9%	46.3%	53.6%	43.1%	44.2%	45.4%	
Sensation Seeking	48.9%	52.8%	56.7%	47.2%	48.1%	49.0%	
Rewards for Antisocial Behavior	44.0%	47.6%	51.1%	47.1%	48.0%	48.8%	

* “Favor” does not necessarily mean parents favor the activity. These items are the students’ perception of parental attitudes. Students may perceive their parents as believing the behavior or drug use is wrong, but if parents are not perceived as thinking it is “**very wrong**”, then the student is at increased risk of participating in the undesirable behavior. “Antisocial Behavior” refers to stealing something worth more than \$5, drawing graffiti, and picking a fight with someone. ”Drug use” refers to the use of alcohol, cigarettes, and marijuana.

**Prevalence of Students "Protected" - Grade 10
Franklin County vs Maine, 2006**

	Franklin County			Maine			Sig Diff
	LCL	%	UCL	LCL	%	UCL	
Community Protective Factors							
Community Opportunities for Positive Involvement	37.6%	42.4%	47.3%	41.9%	42.9%	43.9%	
Community Rewards for Positive Involvement	35.2%	42.5%	49.9%	41.8%	42.7%	43.6%	
Family Protective Factors							
Family Attachment	37.7%	41.5%	45.3%	44.7%	45.6%	46.5%	
Family Opportunities for Positive Involvement	49.4%	54.4%	59.3%	52.5%	53.4%	54.3%	
Family Rewards for Positive Involvement	49.3%	55.0%	60.6%	55.3%	56.1%	57.0%	
School Protective Factors							
School Opportunities for Positive Involvement	59.7%	65.7%	71.6%	63.7%	64.9%	66.0%	
School Rewards for Positive Involvement	65.9%	69.2%	72.6%	65.3%	66.4%	67.5%	
Peer/Individual Protective Factors							
Social Skills	44.0%	50.5%	56.9%	51.7%	52.6%	53.5%	
Belief in the Moral Order	56.1%	60.9%	65.6%	63.2%	64.1%	65.0%	

**Prevalence of Students “At Risk” - Grade 12
Franklin County vs Maine, 2006**

	Franklin County			Maine			Sig Diff
	LCL	%	UCL	LCL	%	UCL	
Community Risk Factors							
Laws and Norms Favorable to Drug Use	54.1%	58.6%	63.1%	48.1%	49.6%	51.2%	+
Perceived Availability of Drugs	46.8%	53.8%	60.8%	47.6%	48.5%	49.4%	
Perceived Availability of Handguns	21.1%	24.5%	28.0%	23.6%	24.6%	25.6%	
Family Risk Factors							
Poor Family Management	48.8%	53.9%	59.0%	45.0%	45.9%	46.7%	+
Family History of Antisocial Behavior	35.3%	42.7%	50.0%	36.8%	38.0%	39.2%	
Parental Attitude Favorable to Drug Use*	58.5%	62.8%	67.1%	45.3%	46.3%	47.3%	+
Parental Attitude Favorable to Antisocial Behavior*	59.2%	63.6%	68.0%	50.3%	51.3%	52.4%	+
School Risk Factors							
Lower Academic Achievement	40.9%	44.6%	48.4%	41.3%	42.2%	43.1%	
Low Commitment to School	42.2%	51.3%	60.5%	46.2%	47.4%	48.5%	
Peer/Individual Risk Factors							
Rebelliousness	29.6%	35.7%	41.7%	37.1%	38.0%	38.9%	
Early Initiation of Drug Use	34.0%	39.2%	44.3%	31.9%	32.9%	33.9%	+
Attitudes Favorable to Antisocial Behavior	43.5%	49.3%	55.1%	46.2%	47.5%	48.8%	
Attitudes Favorable to Drug Use	45.5%	50.6%	55.8%	42.9%	44.1%	45.4%	+
Intention to Use Drugs	34.1%	41.6%	49.0%	34.5%	35.5%	36.6%	
Perceived Risk of Drug Use	58.2%	61.8%	65.3%	51.1%	52.3%	53.5%	+
Interaction with Antisocial Peers	47.7%	53.2%	58.7%	48.5%	49.6%	50.6%	
Friends' Use of Drugs	46.5%	52.5%	58.5%	41.9%	43.1%	44.4%	+
Sensation Seeking	53.5%	57.8%	62.2%	47.4%	48.4%	49.4%	+
Rewards for Antisocial Behavior	56.6%	63.1%	69.6%	58.8%	60.3%	61.8%	

* “Favor” does not necessarily mean parents favor the activity. These items are the students’ perception of parental attitudes. Students may perceive their parents as believing the behavior or drug use is wrong, but if parents are not perceived as thinking it is “**very wrong**”, then the student is at increased risk of participating in the undesirable behavior. “Antisocial Behavior” refers to stealing something worth more than \$5, drawing graffiti, and picking a fight with someone. ”Drug use” refers to the use of alcohol, cigarettes, and marijuana.

**Prevalence of Students "Protected" - Grade 12
Franklin County vs Maine, 2006**

	Franklin County			Maine			Sig Diff
	LCL	%	UCL	LCL	%	UCL	
Community Protective Factors							
Community Opportunities for Positive Involvement	33.1%	41.2%	49.3%	41.2%	42.4%	43.6%	
Community Rewards for Positive Involvement	35.3%	39.6%	44.0%	41.8%	42.9%	44.1%	
Family Protective Factors							
Family Attachment	49.0%	55.0%	61.0%	57.2%	58.1%	59.1%	
Family Opportunities for Positive Involvement	53.7%	57.6%	61.4%	53.1%	54.2%	55.3%	
Family Rewards for Positive Involvement	51.9%	55.9%	59.9%	55.8%	56.9%	58.0%	
School Protective Factors							
School Opportunities for Positive Involvement	63.9%	71.2%	78.4%	63.3%	64.7%	66.1%	
School Rewards for Positive Involvement	48.3%	52.7%	57.2%	51.9%	53.5%	55.1%	
Peer/Individual Protective Factors							
Social Skills	52.3%	57.8%	63.4%	60.8%	61.7%	62.7%	
Belief in the Moral Order	46.1%	54.0%	61.9%	52.3%	53.4%	54.5%	